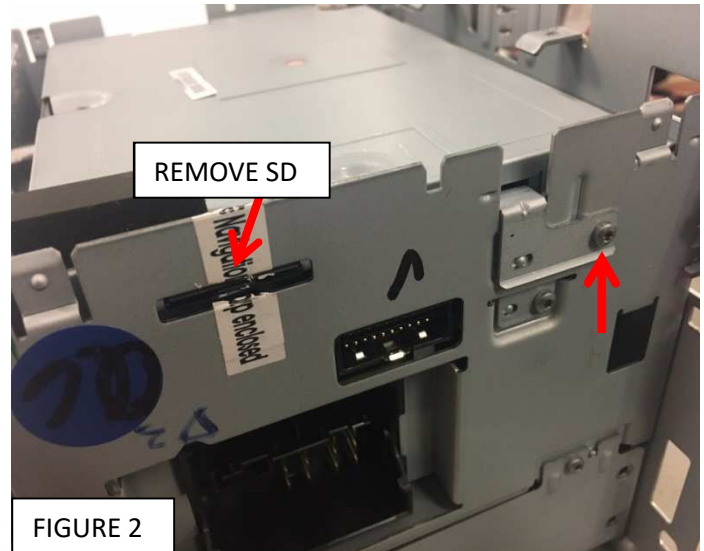
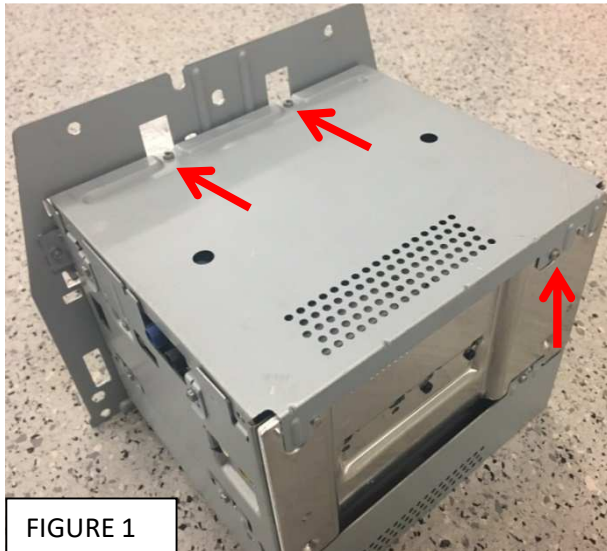


VE SERIES 2 IQ NAVIGATION MODULE REMOVAL

1. With IQ AHU Unit removed from vehicle remove the 3 screws holding the bottom chassis in place and using tweezers or similar remove bottom chassis. Figure 1



2. Remove SD Card and remove single screw. Figure 2
3. On other side remove the 2 x screws. Figure 3



4. Your navigation module can now be removed from Audio Head Unit and reinstalled into your ASL supplied exchange unit (AHU4A & AHU5A AHU units only).
5. If only the Navigation module has been supplied as an exchange, please return the faulty Navigation module to ASL.